

---

## The Cosmo Natal Report for

**Heath Ledger**

4 April 1979

Calculated for 12:00 AM

(Precise birth time not known)

Perth, Australia

Calculated for:

Standard time, Time Zone 8 hours East

Latitude: 31 S 57 Longitude: 115 E 51

Positions of Planets at Birth:

Sun	13 Ari 18	Saturn	8 Vir 10
Moon	4 Can 56	Uranus	20 Sco 23
Mercury	26 Pis 19	Neptune	20 Sag 28
Venus	6 Pis 36	Pluto	17 Lib 59
Mars	27 Pis 22	N. Node	17 Vir 11
Jupiter	29 Can 07		

Monika Barbour

Astrology Solutions Network

(03) 9527 7808 Phone

0423 80 90 80 Mobile

email: [asn@astrologysolutions.com.au](mailto:asn@astrologysolutions.com.au)

web: [www.astrologysolutions.com.au](http://www.astrologysolutions.com.au)

---

## Chapter 1: General Personality Characteristics

### *Sun in Aries:*



You are a person who thrives on challenge, and you often feel that you must battle your way through life, depending upon no one and nothing but your own strength, intelligence, and courage. You believe in being totally honest, true to oneself and one's own vision and convictions, even if that means standing alone. Honesty, integrity, personal honor, and authenticity are your gods, and you have no sympathy for weakness of character in others.

You crave the freedom to do things in your own way, and you work very well independently. Cooperating with others or carrying out another's will is not your style. You like to be the chief - or to go it alone.

You love action and if others are settling down into a nice, comfortable little rut, then you are always ready to stir things up, do something new, make changes, bring in some fresh blood. Routine and sameness are like death to you. You are not afraid of trying something that's never been done before, and even though you may be seen as a fool sometimes, you also discover, invent, and initiate things that others will later emulate. Taking risks and following your own star are the breath of life for you, and you wilt (or get very frustrated and angry) if you cannot do this.

You are spontaneous, impulsive, direct, enthusiastic, and assertive. You believe in the power of positive thinking and positive action, and you think of yourself as a strong person - even invincible. You hate being ill or in any way in a position of dependency. Accepting your own human limitations and emotional needs is often difficult for you.

You are basically aggressive in your attitudes and have less facility in the receptive arts of relating to others, picking up subtle messages and nuances, listening, nurturing, and harmonizing. Often you are so fired up about your own projects or goals that you inadvertently run over or ignore other people's feelings and interests. Being receptive and appreciative of others' contributions, ideas, and feelings would go a long way in improving your relationships. Your impatience to get on with things causes you to be rather insensitive, and to therefore alienate others unnecessarily. You also frequently try to accomplish your ends by using anger or some version of a temper tantrum. You would gain much by learning to slow down, relax, and just let things be sometimes, but your energetic, restless nature rarely allows you to do this.

---

*Sun Opposition Pluto:*

You are intensely willful, zealous, and fanatical, though often you hide the intensity of your feelings and your personal motives and desires. You have an infatuation with power and an almost compulsive desire for personal recognition, the desire to be Somebody. You tend to worship Heroes who have powerful personal magnetism and charisma, and often seek to emulate them. You also have both a fear of, and an intense fascination with, death and the hidden, secret, dark side of life.

## **Chapter 2: Mental Interests and Abilities**

*Mercury in Pisces:*



You are more of a poet than a rational scientist, for your mind does not function in a strictly logical, linear fashion. The language of music, art, or poetry is natural to you, and you are also able to think in highly abstract and symbolic terms. Translating your thoughts and impressions into concrete, everyday language may be difficult for you at times and consequently you may appear less intelligent or at least less quick-witted and verbal than others. This was especially true of you as a child, and you probably daydreamed a good deal also. You are intuitive and are able to sense what others' thoughts and feelings are, even before they say anything to you. You often form an opinion about a person or situation without much factual knowledge of them, and your impressions are usually correct. You can be somewhat absent-minded and you become so immersed in your own thoughts that you overlook things in your immediate, tangible environment. You are extremely open-minded and believe that anything is possible. Intangible or spiritual forces seem just as real to you as anything in the concrete world. Your imagination and your sympathetic understanding of other people are two of your greatest gifts.

*Mercury Conjunction Mars:*

You have a sharp mind and a sharp tongue as well, and love a vigorous discussion or debate. You express your thoughts in a clear, decisive, convincing style. You dislike vagueness and fuzzy thinking, and are quick to point out the discrepancies in another's argument. At times you are verbally aggressive and abrasive to others, and you tend to overstate your case or offend people by your unadorned frankness. You can be an effective spokesperson, lawyer, or salesman. You have an aptitude for writing as well, particularly criticism or satire. You enjoy mental challenges and mental work.

---

*Mercury Trine Jupiter:*

You have an ongoing interest in learning and expanding your mental horizons. You enjoy traveling, philosophical discussions, and exchanging ideas with those of different experiences and viewpoints. Broad-minded and fair, you are well-suited to law, consulting, diplomatic relations, and also business. You learn quickly, and can pick up on a new idea or concept with relative ease.

### **Chapter 3: Emotions: Moods, Feelings, Romance**

*Moon in Cancer:*



You respond very much to the emotional tone and atmosphere around you, and can be dominated by your fluctuating and unpredictable moods. You often appear irrational to others because you cannot always explain the reason or source of your feelings. Anyone who lives with you must accept your ups and downs and appreciate your need for times of withdrawal.

You are also very sympathetic and understand the unspoken feelings and needs of others. You take slights and rebuffs very personally and though you may forgive a transgression by a friend or loved one, you never forget it.

*Moon Trine Venus:*

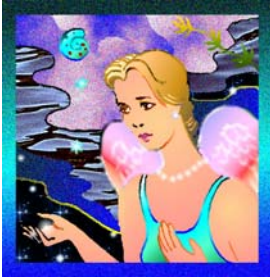
You feel that little, daily acts of caring and thoughtfulness are essential to the happiness and success of a relationship and you know how to make others feel accepted, loved, and cherished. You enjoy good relationships with women.

*Moon Sextile Saturn:*

You have an inner poise and balance that enables you to act in a cool, efficient manner during emotional traumas and stress. You keep perspective and objectivity about highly charged emotional issues - sometimes to the chagrin of others who might wish that you would react more intensely. You are quietly supportive and faithful to your friends and loved ones.

---

*Venus in Pisces:*



Tremendously softhearted and sympathetic, you give very selflessly and devotedly to those you love and often allow others to become overly dependent upon you. More compassionate than passionate, you may become romantically involved with someone because they need love and you want to help them, rather than out of mutual pleasure or attraction.

You are drawn to sensitive, imaginative, gentle souls - poets, musicians, dreamers - or to someone you feel you can have a deep spiritual relationship with. You idealize love and have a very beautiful, romantic vision of what love can be.

*Venus Opposition Saturn:*

You are serious and find it difficult to enjoy yourself in a lighthearted, open and playful way with others. You rarely do something purely for pleasure, and can be very close-fisted and parsimonious. Perhaps due to painful separations in your early life, you are very cautious about becoming close to people and sharing your feelings. Though you crave love and affection, intimacy is difficult for you. You may become romantically involved with people who do not value you or treat you well. You need to learn to love and value yourself before you will find happiness in love.

## **Chapter 4: Drive and Ambition: How You Achieve Your Goals**

*Mars in Pisces:*



You are non-combative, noncompetitive, and something of a pacifist. You will give something up rather than fight for it. You may seem weak-willed or ineffectual, for you do not have a strong ego drive for personal achievement and material advantage, or for winning at the expense of someone else. Being first, being best, being on top doesn't mean much to you, and you can be quite happy in a supporting role, working for the benefit of others or for a cause that you believe in. You are gentle and impressionable and are motivated by less mundane and less tangible things than most other people. You may have difficulty formulating clear, definite goals for yourself and making your way in the world. You have many dreams, high ideals, and a strong mystical or religious impulse. You also have a creative imagination and can successfully apply yourself to art or music. You have a sensitive physique and need to maintain good regular health habits in order build strength and stamina.

---

*Mars Trine Jupiter:*

Your self-confidence and vitality are strong and you believe you can do just about anything you want to. You have an enterprising spirit, a good sense of timing, and the ability to sense what will succeed and what won't. You usually make fortunate decisions in work or business activities. You enjoy healthy competition and you have a rather playful, good-humored attitude toward it. You mostly compete with yourself to see how far you can go or how much you can accomplish. You like to keep stretching your limits.

## **Chapter 5: Other Influences**

*Jupiter in Cancer:*



You make others feel accepted and comfortable. You have a knack for breaking down feelings of alienation and you make others feel included and a part of group activities. You have a loving, protective side that wants to take care of everyone. Creating a supportive atmosphere that is nourishing both to yourself and to others is one of your strengths.

Also, your home and heritage are important to you, and you maintain close connections to your past.

*Saturn in Virgo:*



You have a penchant for order and precision, and an almost compulsive attention to detail. You are often hypercritical and can be such a demanding perfectionist that you discourage yourself or others from even attempting something that won't be done exactly the way you know it should be done.

You frequently over analyze or pick things apart mentally. You may be something of a hypochondriac also. You must learn that you do not have to rationally understand everything in order for it to be valid, and also to relax your unnecessarily high or strict standards.



---

*Uranus in Scorpio:*



You are part of a 7 year group of people who break up all manner of taboos regarding death, sex, and any other personal, private, or difficult topics. Your age group is less modest about sex than other age groups and promiscuity is not uncommon. You love emotional intensity, and there are many extremists and fanatics in your age group.



*Neptune in Sagittarius:*

You are part of a 14 year group of people that are extremely idealistic and farsighted in their dreams. Your age group is very liberal and expansive in outlook, and consequently churches become much more flexible and more eclectic in their approach during your life time. Religions that do not adapt to the broad-minded attitude of your age group simply are unable to attract very much interest and involvement from you.

A great deal of metaphysical musing and speculation is evident in your age group, and there is a very strong interest in all manner of psychic phenomena, UFO's, prophecy, etc. This interest will open many new doors and insights, but will also often lead to a great deal of fantasizing and speculation that is taken more seriously than it should be.

*Neptune Sextile Pluto:*

The entire generation to which you belong has tremendous opportunities for spiritual rebirth and awakening. This will not be forced upon you or precipitated by unavoidable events; rather it comes from an inner yearning and a natural propensity to seek the depths.

*Pluto in Libra:*



You are part of a 12 year group of people who are deeply interested in personal relationships. Your age group has a deeply-rooted yearning to see people relating and communicating with each other effectively and harmoniously. There is little egotism and a willingness to hear the other person's side of the story and a readiness to compromise and arbitrate different points of view. In

---

fact, the need for harmonious, peaceful relationships is so strong that there is a tendency to overlook real differences and to focus only on the similarities in an attempt to bring different parties into harmony with each other.

Interest in psychology and sociology is high in your age group. There is a tremendous heightening of awareness of social skills. Your age group will experiment with different marriage styles, family relationships, and even business relationships in an attempt to bring fair treatment and effective communication between people. Interest and appreciation for other cultures is also strong, and your age group will work hard to preserve and support the cultural heritage of all ethnic groups.

Your strong yearning for equitable and harmonious relationships is also reflected in major advancements in trade agreements, arms control, and international cooperation that are designed and implemented by your generation. These agreements and policies foster a much safer and more cooperative environment for all, although there is also a tendency for greedy individuals to take advantage of the conciliatory atmosphere and twist situations to their own ends.

In short, you are part of a generation of individuals who are deeply interested in other people; you are a humanistic and humanitarian group. You will struggle and experiment with personal relationships, and forge new models for how people can relate as friends, family members, and members of nations as well.